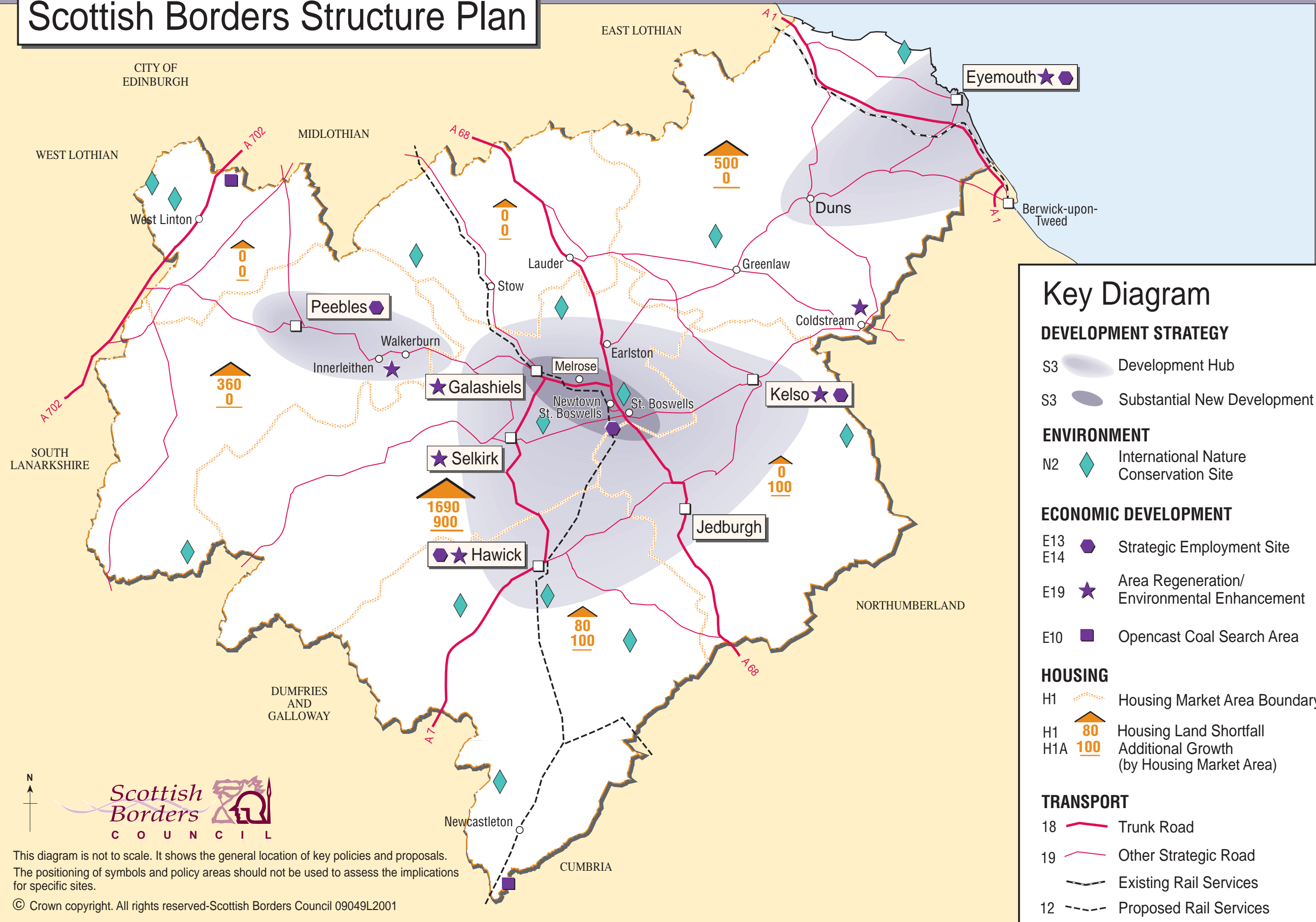


Scottish Borders Structure Plan



Key Diagram

DEVELOPMENT STRATEGY

- S3 Development Hub
- S3 Substantial New Development

ENVIRONMENT

- N2 International Nature Conservation Site

ECONOMIC DEVELOPMENT

- E13 Strategic Employment Site
- E14 Strategic Employment Site
- E19 Area Regeneration/ Environmental Enhancement
- E10 Opencast Coal Search Area

HOUSING

- H1 Housing Market Area Boundary
- H1 Housing Land Shortfall
- H1A Additional Growth (by Housing Market Area)

TRANSPORT

- 18 Trunk Road
- 19 Other Strategic Road
- Existing Rail Services
- 12 Proposed Rail Services

Scottish Borders COUNCIL

This diagram is not to scale. It shows the general location of key policies and proposals. The positioning of symbols and policy areas should not be used to assess the implications for specific sites.

© Crown copyright. All rights reserved-Scottish Borders Council 09049L2001